

**CSX** INTERMODAL  
TERMINALS



CSX INTERMODAL TERMINALS, INC

## CONTRACTOR AWARENESS BRIEF

# SAFETY AT CSX

## A GUIDING PRINCIPLE

### Operate Safely

One of CSX's 5 Guiding Principles of Scheduled Railroading is to 'Operate Safely', which states we must maintain 100% compliance with safety and operating rules 100% of the time.

Contractors, suppliers, and visitors are all expected to adhere to this Guiding Principle to ensure we maintain a safe work environment on CSX properties.

CSX Intermodal Terminals Inc. defines **How to** Operate Safely and expects contractors/consultants to:

1. **Know the work, perform it responsibly.**
2. **Avoid unsafe acts and hazardous conditions.**
3. **Look out for others and hold them accountable to Operate Safely.**

| GUIDING PRINCIPLE          | DESCRIPTION                                                                                                                                                                       |
|----------------------------|-----------------------------------------------------------------------------------------------------------------------------------------------------------------------------------|
| Improve Customer Service   | Do what we say we are going to do. Know your customer and understand how you can drive value. Proactively communicate at all times including when we cannot meet our commitments. |
| Control Costs              | Eliminate unnecessary steps that add complexity and costs.                                                                                                                        |
| Optimize Asset Utilization | Do more with less by maximizing the value of our assets through increased transit speed and lower dwell.                                                                          |
| Operate Safely             | Maintain 100% compliance with safety and operating rules 100% of the time to protect our employees, our customers' freight, and the communities in which we operate.              |
| Value & Develop Employees  | Act with integrity, make sure employees know what is expected of them and reward them when they do the right things, and always strive to get better.                             |



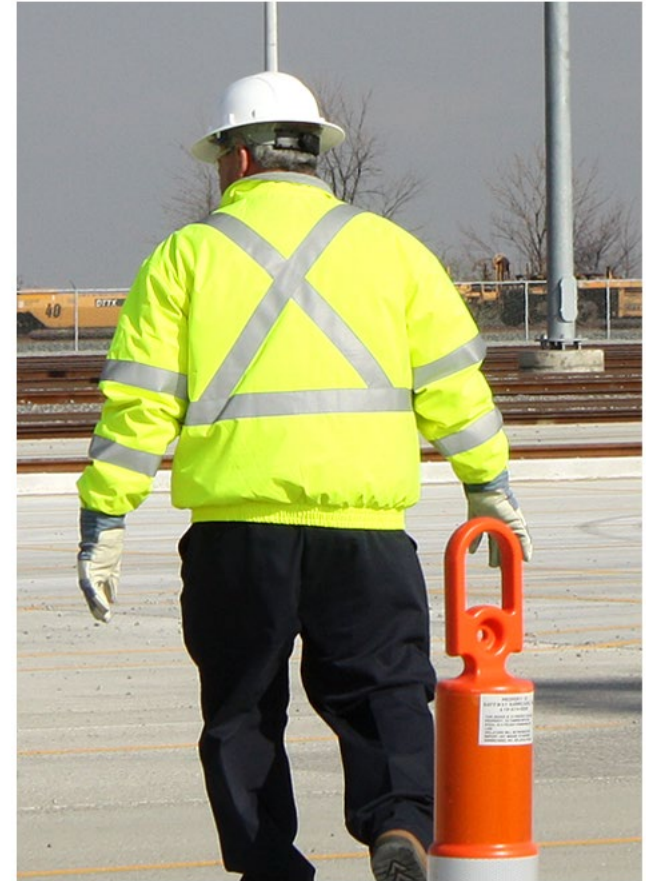
# CSXIT SAFETY PROGRAM

## For Suppliers, Contractors and Consultants

1. Registration with the CSX third party partner for safety compliance and training (ISNetworld) is required. Company and employee level compliance is mandatory.
2. CSXIT safety instructions and policy are updated regularly and posted at [www.csxintermodalterminals.com](http://www.csxintermodalterminals.com). The documents include:
  - Safety Plan
  - Safety Rulebook (rules apply to contractors and consultants.)
  - Intermodal Mishap Statistics
  - Intermodal Critical Issues
  - Terminal Drayman Guides (also useful for anyone new to the terminal.)
  - Drayman Safety SOP.

The requirement to Operate Safely and abide by published safety rules, regulations and guidelines is cited in contractor agreements.

Subcontractors fall under the responsibility of the primary contractor and must comply with all rules and regulations also. Contractors will participate in safety programs and report all mishaps and injuries to terminal management immediately per the Safety SOP.





# CSXIT SAFETY RULES & PROCEDURES

CSXIT's safety rules, policies, programs, and work practices are applicable to consultants, contractors, and visitors. While on CSXIT property, all consultants, contractors, and visitors must comply with these requirements.





# SAFETY POLICY STATEMENT

- The CSX vision is to be the best run railroad in North America. CSXIT extends that vision to terminal operations and is committed to being the best run and safest intermodal terminal operator in North America.
- PPE requirements are not negotiable, everyone on terminal will be equipped as detailed in the Safety Rule Book (hard hat, protective lenses, CL 2 reflective vest and steel toe boots.)
- Pre-shift safety briefs must be delivered to crews prior to starting work each day and if conditions change during a shift. Mandatory discussion is required on:
  - Work to be performed, risk associated with that work and how the risk will be managed to prevent unsafe behaviors and accidents.
  - Protection if working on or about tracks and individual responsibilities for ensuring switch/blue signal/detainer protection methods are in place before work begins.
- CSXIT expects contractors and consultants to focus on NO unsafe behavior while on property with the goal of preventing personal injuries and property damage.
- Rely on good judgment, following the safest course available.
- No action should be taken until we are fully aware of the hazards involved and have a plan to avoid injury.
- If you aren't sure, stop. Ask questions, get information, understand actions and consequences before safely continuing the work.



**Remember** - No job is so important, no service so urgent that we cannot take the time to perform all work safely.

# ON-TERMINAL SAFETY TRAINING

Before accessing CSXIT terminals or CSX property  
All independent contractors and their employees  
must complete registration with ISNetworld and  
complete the required training modules hosted by  
ISNetworld on their Learning Management  
System.

## Required Training

|                                                                                            |
|--------------------------------------------------------------------------------------------|
| Blue Signal Training                                                                       |
| CSX Environmental Awareness Training                                                       |
| CSX Rail Security Awareness                                                                |
| CSXIT Standard Operating Procedures (SOP) and Safety Rules                                 |
| CSXIT Vendor Orientation                                                                   |
| Employee Background Screening                                                              |
| Hazardous Communication (Hazcom) – [OSHA Hazard Communication Standard (HCS) 1910.1200]    |
| Hazardous Material Awareness (Hazmat) – (49 CFR Subpart H Section 172.704)                 |
| Acknowledgement of Minimum Safety Requirements for contractors working on CSXT property    |
| Acknowledgment Operation Lifesaver Safety Tips and Facts                                   |
| Spill Prevention, Control and Countermeasures Plans (SPCC) – (40 CFR Title 40, Part 112.7) |



# ON-TRACK SAFETY TRAINING

Contractors and sub-contractors under contract with CSXIT, CSX Technology, CSXT – Facilities or being managed by CSXT – Engineering may also be required to complete Roadway Worker training if the scope of work to be performed includes:

**Duties include:**

- Track Inspection
- Construction
- Maintenance
- Repair of: track, bridges, roadway, signal and communications systems, electrical traction systems, roadway facilities or roadway maintenance machinery
- Any work *within 25' from the outside of the rail* or with the potential for fouling track.



# CONTRACTOR SAFETY & SECURITY

## Contractor Responsibilities

- Every contractor employee will carry photo identification and present it when requested.
- Check in with the local terminal leader to ensure alignment on work to be done and that impact on terminal operations is clearly understood and in the terminal plan for that day.  
Check out with the local terminal leader at the end of the day when clearing the property.
- The Senior contractor representative on property will carry a copy of the contract or work order along with the scope of work. They must be able to identify their CSX point of contact with phone number.
- Check in with CSXT yard personnel (if applicable)
- Ensure pre-shift safety brief is delivered and track protection methods clearly understood.

If unable to contact any CSXIT personnel, contact the CSXT Public Safety Coordination Center at 800-232-0144 and inform them of:

1. Identity
2. Work location
3. Company Name
4. Contact information

Work will not commence until all coordination measures above are done.





# FALL PROTECTION

## Ensure compliance with:

- OSHA Regulations
- FRA Bridge Workers Safety Rules
- Extract from CSXIT Rule Book
  - **IM-STF.7.a.** Fall Protection equipment is required for work at or exceeding unprotected heights of 4' feet and will be done per the OSHA standards. Only trained and authorized employees may perform work that requires fall protection equipment.
  - **IM-STF.7.b.** Inspect fall protection equipment prior to each use. Fall protection equipment must be worn and used per manufacturer instructions.



# JOB BRIEFINGS

## **Conducting a pre-shift safety briefing:**

- Before beginning a work activity.
- When work activity or work conditions change.
- When another person joins the crew.
- Discuss the sequence of basic job step.
- Discuss potential hazards related to the job and how the hazards will be managed.
- Discuss track protection methods for the shift and who is responsible for establishing protection.
- Inspect PPE for serviceability and completeness.
- Make certain that everyone understands all instructions and how the job should be performed.
- Follow up with fellow employees to ensure compliance with safe work practices.
- Must comply with all safety rules and company policies that relate to job tasks.
- Our work place is drug and alcohol free.
- The behavior in our work place is civil and courteous.
- Local, state, and federal laws and regulations that relate to our job tasks are observed.
- Oral and written report of accidents and injuries are made as soon as possible to the supervisor or employee in charge.
- Make certain that you warn co-workers of unsafe acts or hazards.



# ELECTRONIC DEVICES

## Initiating Phone Calls

- Vehicle must be brought safely to a stop in a non risk area
- No movement will be made while the vehicle driver is on the call.
- After the call is complete, the driver may proceed in driving on the terminal.

## Receiving Phone Calls

- Stop in a safe area. Driving/moving on terminal while using any electronic device is prohibited.

## Other Safety Guidelines

- Use of all electronic devices are prohibited.
  - This includes watches that receive text messages or any device used for communication.
  - Electronic or battery operated devices used for smoking or vaping.
- Turn off cell phones while refueling and in blast zones
- Keep phone conversations short. Safely stop before engaging in a phone call, text messaging or email.



# ENVIRONMENT

## **Waste Material**

- Handle and/or dispose per terminal guidance, applicable governmental regulations and CSXIT policies

## **Drums, Pails, and Buckets**

- Must be properly labeled
- Store in properly designed storage areas
- Comply with all governmental regulations and CSXIT policies





# FIREARMS/WEAPONS

*Vendors, consultants, contractors, or visitors shall not carry or have in their possession firearms, magazines and ammunition, weapon parts, weapons or knives.*

These items are not permitted on CSX property with the exception of law enforcement in official capacity.





# MOTOR VEHICLES

- Collisions are one of the most common of accidents occurring on CSXIT property.
- Before backing ensure the area is clear. If two or more people occupy a motor vehicle, designate one person to guide backing movements from the ground.
- Ensure clearance around bollards, pillars, entrances and exits to avoid striking a fixed object.
- Whenever possible, back into parking spaces
- Seat belts must be worn while operating or riding in equipped vehicles.
- Lift equipment on terminal has the right of way. Ensure to stay clear of and do not stop in a lift operations area or crane path adjacent to the track.
- Safety cones will be placed at the front and rear of contractor vehicles that are stationary performing work on the terminal.



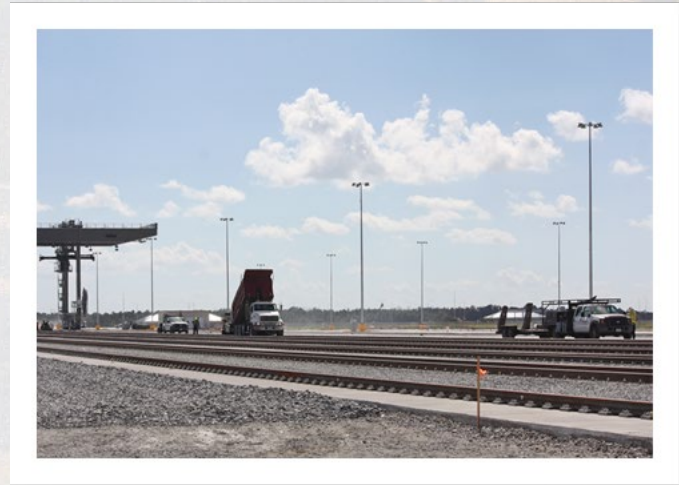


# ON OR ABOUT TRACKS

- Do not park in a crane path or within 10 feet of an active track.
- Be alert for the movement of cars, locomotives, or equipment at any time, in either direction, on any track
- Do not mount, dismount, or cross over moving locomotives or cars
- Always look in the direction from which the train/equipment is coming
- Look in both directions before fouling or crossing
- Do not cross within 25 feet of the end of standing cars, equipment, or locomotives
- Do not cross over coupled or moving freight cars
- Do not step or sit on the rail, switch, or retarder
- Do not go under any car, equipment, or locomotive
- Ensure Blue Signal Protection before touching any on-track equipment or locomotives

## Stand at Least

- 30 feet from switch/derail with route of a passing train
- 10 feet from a switch or derail being traversed by engines or cars during switching operations



# PPE, CLOTHING, & JEWELRY

## Personal Protective Equipment (PPE)

- Company approved and properly fitted
- Approved safety glasses with side shields at all times
- Do not wear tinted eyewear when indoors or when there is low level light conditions
- Approved hearing protection where required
- Approved safety-toe shoes outside of office environment
- Approved hard hat at all times where required
  - Not required in equipment with fully enclosed cabs

## Clothing & Jewelry

- Do not wear loose-fitting clothing
- Wear trousers that cover your entire lower body
- Wear a shirt that provides protection, has at least one-quarter length sleeves, covers the abdomen and back
- Do not wear finger rings outside of an office environment
- Do not wear jewelry that could become entangled in equipment





# TOOLS & EQUIPMENT

## Inspect Before Use

- Tools
- Equipment
- Related safety devices

## DO NOT

- Use any tool, equipment, or safety object that you are not qualified to operate or is defective
- Use a tool for any purpose other than what it was designed for
- Modify any tool, equipment, or safety device
- Strike a tool with your hand or other part of your body



# WORK ENVIRONMENT

## **ALWAYS**

- Keep a clean and orderly work area
- Constant awareness and concentration
- Pay attention
- Use designated walkways

## **Excavations, Pits, and Manholes**

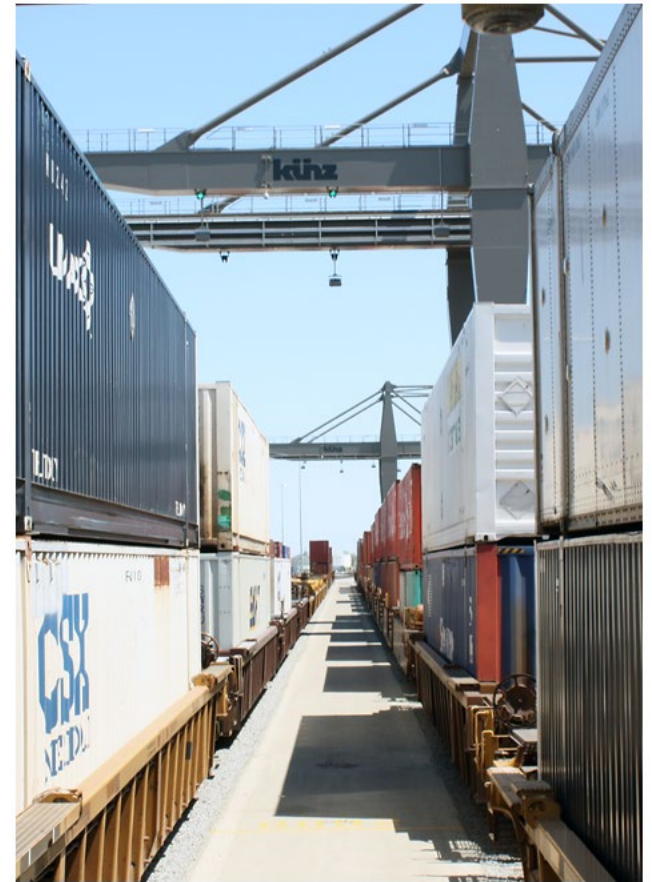
- Shore up vertical excavations of four feet deep or more
- Call utility locators before you dig
- Protect all open holes and trenches with adequate barricades

## **IN CASE OF EMERGENCY**

If you or anyone else's health is in immediate danger, call 911

## **For all other emergency situations**

Immediately stop what you are doing, get to a safe place and contact the PSCC at 1-800-232-0144





# RULES DRUM CONTAINERS

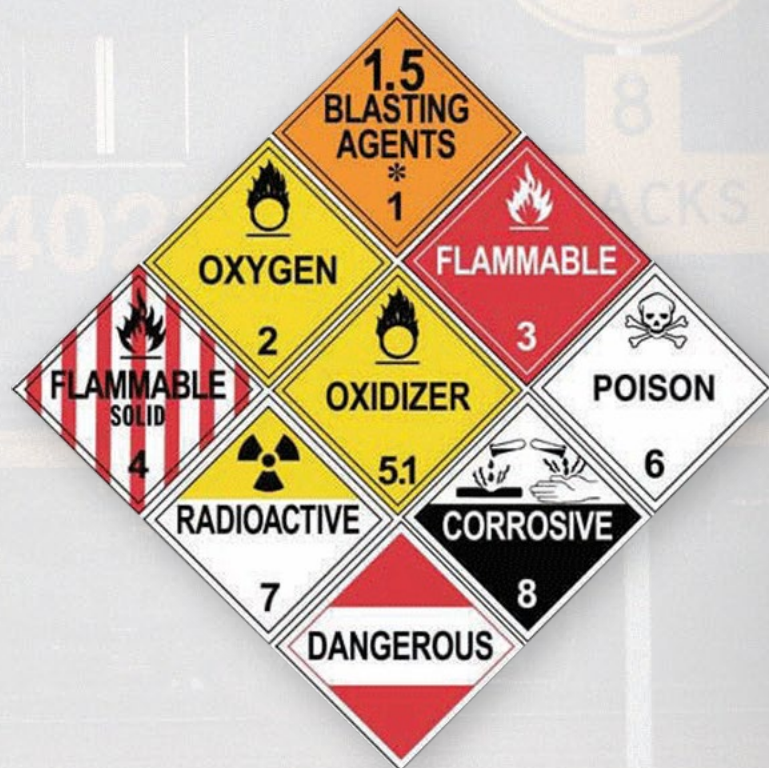
1. Products must never be used or left in unmarked containers
2. Empty drums must have the bungs and lids securely in place, be labeled "EMPTY," and stored in a designated storage area
3. Store drums, pails, buckets, and other containers (full or empty) in properly designated storage areas
4. Comply with environmental regulations and CSXIT policies



# RULES

# HAZARDOUS MATERIAL AWARENESS

1. Hazardous materials must be clearly marked and stored at all times per local, state, federal and CSXIT policies.
2. Ensure the local terminal leader is informed when hazardous materials are brought aboard the terminal for use in work/service/project.
3. When handling hazardous materials, employees must:
  - a) Comply with Material Safety Data Sheet (MSDS) instructions.
  - b) Clear the area and notify the proper authorities in the case of an emergency;
  - c) Handle, store, and transport all flammable and combustible liquids in metal, CSXT approved containers that are color coded as follows: ◦ Red- gasoline ◦ Blue- kerosene ◦ Green or Yellow- diesel
  - d) Transport and use compressed gas and oxygen cylinders in a secured, vertical position;
  - e) Secure cylinders of flammable compressed gas at least 20 feet from cylinders of oxygen, unless separated by a fire-resistant partition at least five feet high;
  - f) Cap all oxygen and fuel gas tanks when not in use unless protected by an approved nonrotating valve stem protector
  - g) Purge regulators and hoses after use.





## RULES

# HAZARDOUS WASTE MANAGEMENT

1. Special handling, accumulation, and disposal of hazardous wastes required to comply with environmental regulations
2. All 55-gallon drums used for the accumulation of hazardous waste must be DOT approved
  - Type UN1A1 (closed top) drums are used for liquid wastes
  - Type UN1A2 (open top) drums are used for solid wastes
3. Containers used for accumulation of hazardous waste must be labeled "HAZARDOUS WASTE" before used
4. Containers must be kept in a designated area
5. Containers must be kept closed except when waste is being added
6. Containers must never be overfilled. For 55-gallon drums, three inches of head space should be left in the top
7. Containers used for the accumulation of hazardous waste must have any old labels removed or painted over
8. All appropriate personal protective equipment must be worn when handling hazardous waste
9. All personnel involved with the handling of hazardous waste must be trained annually
10. Never allow hazardous waste to enter drains or the environment
11. Hazardous waste must never be mixed with any other waste, such as used oil
12. The primary accumulation area for hazardous waste must be secured against unauthorized entry

## RULES

# NON-HAZARDOUS WASTE MANAGEMENT

**Disposal**

1. Unauthorized, unpermitted, or illegal disposal of solid waste is against CSXIT policy. Any open dump site must be identified and reported to the local environmental Field Services Personnel or the Public Safety Coordination Center (800) 232-0144
2. Petroleum contaminated material, such as soil and absorbents, must be collected, stored, and disposed of properly. Contact the local Environmental Field Services Personnel or the Environmental Information Line (800) 325-8182 for assistance

**Recycling**

1. Trash and wood must never be placed in scrap metal piles or scrap metal dumpsters

**Waste Management**

1. All dumpsters must have lids or covers and remain closed when not in use



# RULES PETROLEUM MANAGEMENT

1. All spills must be reported to the immediate supervisor/officer in charge, the CSXT Public Safety Coordination Center (800) 232-0144 and the local Environmental Field Services Personnel.
2. Inspect all hydraulic hoses and fittings prior to, during, and following equipment operation.
3. All leaking hydraulic hoses and fittings must be repaired immediately.
4. During hydraulic hose change out-out, care must be taken to contain the oil and protect the environment.
5. NEVER dispose of oil by pouring it into any drain or onto the ground.
6. An appropriate spill containment kit must be readily available wherever there is a potential for a petroleum release.
7. Used petroleum products from maintenance and repairs to fuel or oil dispensing equipment must be collected and stored in a designated used oil tank.
8. Used oil is a regulated waste and must be collected for proper disposal. Never use it for other purposes such as weed control, dust control, or for lubricating switches.
9. Containers of oils, chemicals, or cleaners must never be stored near drains.
10. Used petroleum products, especially hydraulic fluids and waste oil from maintenance , must be disposed of properly.
11. Oil and hydraulic filters must be punctured and drained prior to disposal.
12. Oily rags must be disposed of in a separate container and kept isolated from other items being disposed.

# RULES SPILL NOTIFICATION

1. All spills must be promptly reported to the CSXT Public Safety Coordination Center at (800) 232-0144
2. When a spill is discovered, stop the source of the spill if it can be done safely
3. If an unknown spilled material is discovered assume it is hazardous until proven otherwise. Use caution and notify the CSXT Public Safety Coordination Center (800) 232-0144.
4. Contain the spill to prevent it from entering a waterway or drain.





# RULES STORMWATER & GROUNDWATER MANAGEMENT

1. Housekeeping around the entire facility must be neat and orderly. All debris and rubbish must be removed and grass/weeds maintained
2. Storm drains must be viewed and inspected frequently. During a construction project, coordinate regular inspections with the construction team to ensure the storm drains remain clear.
3. Trash and litter must never be thrown on the ground
4. Containers of oils, cleaners, and chemicals, including de-icing salt, stored outside must be protected from rainfall or snow and must never be stored near drains
5. Erosion control must be used around soil stockpiles and excavation areas to prevent sediment contamination of storm water runoff





# RULES USED OIL MANAGEMENT

1. Used oil is a regulated waste and must be collected for proper disposal by a CSXIT approved, licensed and permitted used oil vendor. Never use it for other purposes such as weed or dust control





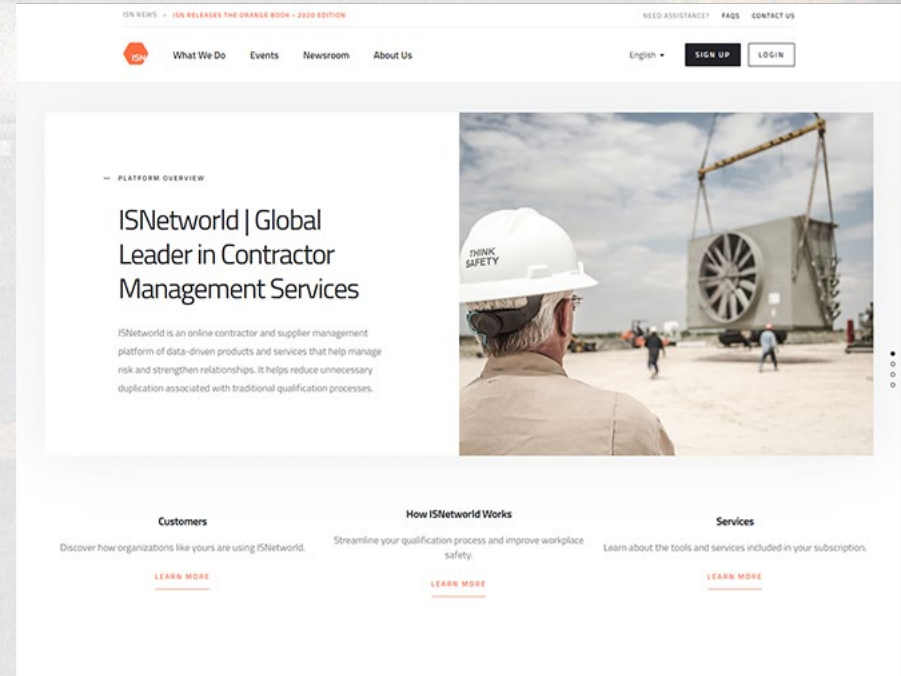
# RULES WASTE MINIMIZATION & RECYCLING

1. Unauthorized, unpermitted, or illegal disposal of waste is against CSXIT policy. Any unauthorized disposal must be identified and reported to the Environmental Field Services Personnel or the Tell CSX Program at (877) Tell-CSX.
2. Empty water bottles must be placed in trash containers
3. Trash and wood must never be placed in scrap metal piles or dumpsters
4. Housekeeping around the entire facility must be neat and orderly. All debris and rubbish must be removed and grass/weeds maintained
5. Trash and litter never thrown on the ground



# ISNETWORLD REGISTRATION & COMPLIANCE

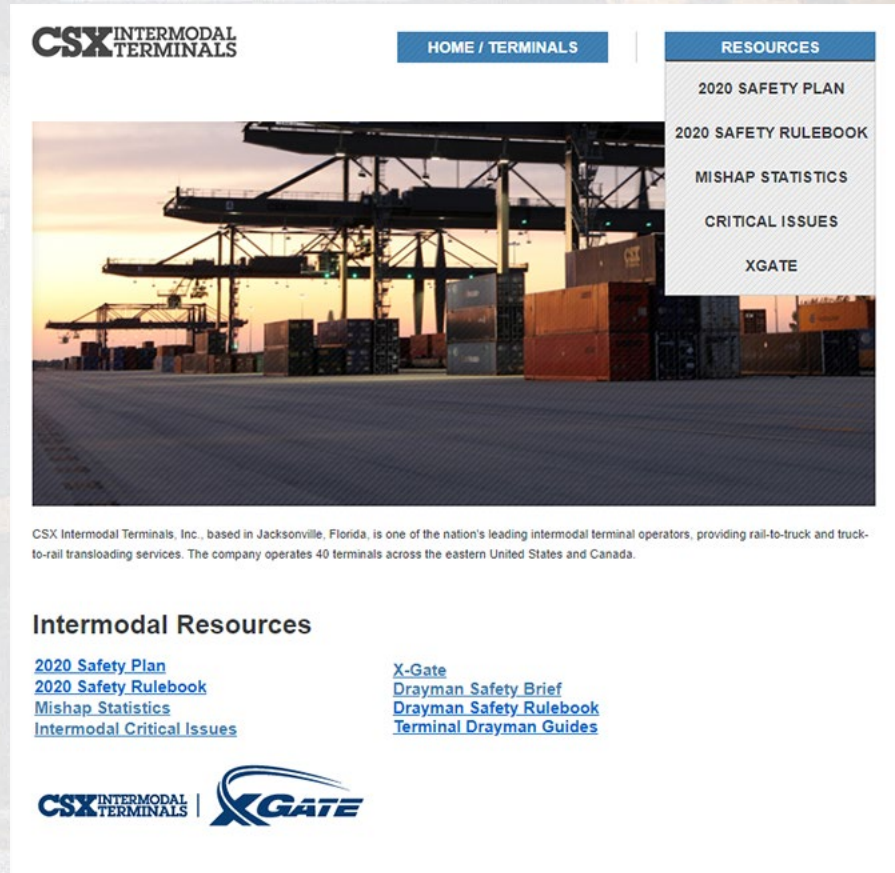
- CSX complies with FRA and OSHA requirements to ensure vendors Operate Safely.
- CSX partnered with a 3rd Party – to monitor registration, company level compliance and employee screening and training required by CSX.
- In most cases, ISNetworld hosts the training from their Learning Management System.
- ISNetworld assistance reached at [isnetworld.com/en/contact-us](https://isnetworld.com/en/contact-us). Select to communicate via chat or submit a request.





# INTERMODAL SAFETY DOCUMENTS DOCUMENT AVAILABILITY

- [www.csxintermodalterminals.com](http://www.csxintermodalterminals.com)
- Current year Safety Plan
- 2020 Safety Rule book
- Mishaps Statistics card
- Intermodal Critical Issues
- X-Gate info
- Drayman Safety Brief
- Drayman Safety Rulebook
- Terminal Drayman Guides



The screenshot shows the CSX Intermodal Terminals website. At the top, there is a navigation bar with the CSX logo and the text "INTERMODAL TERMINALS". To the right of the logo is a "HOME / TERMINALS" button. Further right is a "RESOURCES" menu with the following items: "2020 SAFETY PLAN", "2020 SAFETY RULEBOOK", "MISHAP STATISTICS", "CRITICAL ISSUES", and "XGATE". Below the navigation bar is a large image of a container yard at sunset. Under the image is a paragraph of text: "CSX Intermodal Terminals, Inc., based in Jacksonville, Florida, is one of the nation's leading intermodal terminal operators, providing rail-to-truck and truck-to-rail transloading services. The company operates 40 terminals across the eastern United States and Canada." Below this text is a section titled "Intermodal Resources" with a list of links: "2020 Safety Plan", "2020 Safety Rulebook", "Mishap Statistics", "Intermodal Critical Issues", "X-Gate", "Drayman Safety Brief", "Drayman Safety Rulebook", and "Terminal Drayman Guides". At the bottom of the page is the CSX logo and the "XGATE" logo.

**CSX** INTERMODAL  
TERMINALS

HOME / TERMINALS

RESOURCES

- 2020 SAFETY PLAN
- 2020 SAFETY RULEBOOK
- MISHAP STATISTICS
- CRITICAL ISSUES
- XGATE

CSX Intermodal Terminals, Inc., based in Jacksonville, Florida, is one of the nation's leading intermodal terminal operators, providing rail-to-truck and truck-to-rail transloading services. The company operates 40 terminals across the eastern United States and Canada.

**Intermodal Resources**

- [2020 Safety Plan](#)
- [2020 Safety Rulebook](#)
- [Mishap Statistics](#)
- [Intermodal Critical Issues](#)
- [X-Gate](#)
- [Drayman Safety Brief](#)
- [Drayman Safety Rulebook](#)
- [Terminal Drayman Guides](#)

**CSX** INTERMODAL  
TERMINALS | **XGATE**