



SAFETY RULES & REGULATIONS

- Obey ALL Signs
- IANA Registered CDL Required
- No Passengers
- Cell Phone Use in Designated Area Only
- Closed-toed Shoes Required
- Use Headlights and Flashers
- Seatbelts Required
- Turn Off Engines at Gate or When Exiting the Vehicle at All Times
- Remove Zip Ties and Place in Trash
- Ensure Tracks Are Clear Prior to Crossing
- No Pull Through Parking
- Perform Tug Test
- Yield to All Ramp Equipment

Knowledge of CSXIT Rules and Regulations are the responsibility of each individual drayman. Copies of the CSXIT Drayman Safety Handbook, CSXIT Safety Rulebook are available on www.csxintermodalterminals.com or upon request at the terminal.

KEY ACTIONS FOR SUCCESS

PRE-ARRIVAL

- Verify CDL credentials
- Register in the IANA/UIIA Intermodal Driver Database – uiia.org
- Verify billing – ShipCSX.com
- Review Drayman Safety Brief and Handbook – csxintermodalterminals.com

IN-GATE

- Turn off engine
- Present CDL
- Provide Seal and Booking Numbers as applicable
- Prepare for In-Gate Inspection
- Follow directions on J1/Mission Ticket or as provided by terminal personnel

OUT-GATE

- Provide CDL and Seal/Equipment Numbers if requested

ROADABILITY

- All bad order equipment will be directed to Roadability

DRAYMAN ASSISTANCE

- Draymen who require assistance will park in the Driver Assistance area and report to the Driver Assistance window

CONTACT INFORMATION

Check billing, storage and container locations on ShipCSX.com

For more information, call 800-542-2754, option 2 to speak with a Customer Service Representative.

CSX INTERMODAL
TERMINALS

csxintermodalterminals.com

700 Kriner Road | Chambersburg, PA 17202

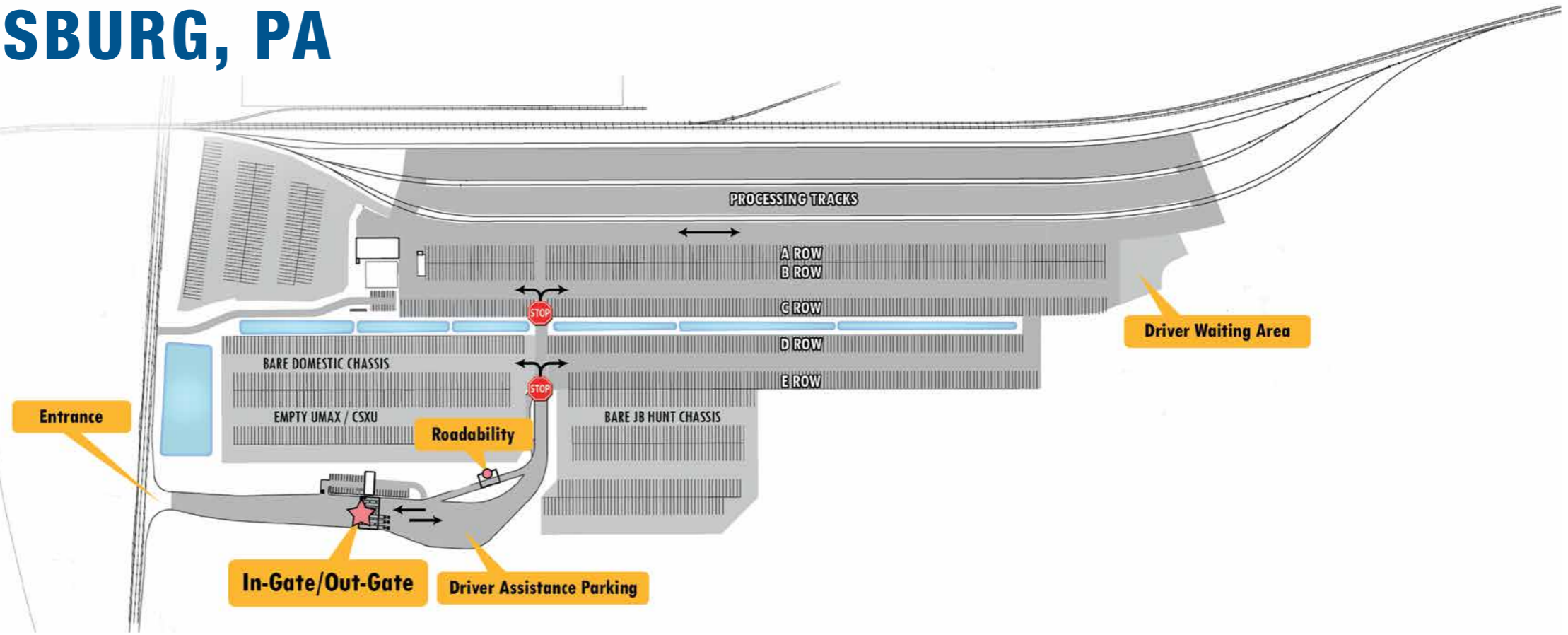
CHAMBERSBURG DRAYMAN GUIDE



CSX INTERMODAL
TERMINALS

CHAMBERSBURG, PA

700 Kriner Road



TERMINAL-SPECIFIC PROCESSES

SAFETY RULES AND OPERATING PROCESSES

- Obey all posted speed limit signs and stop signs
- Draymen are prohibited from pulling through parking bays
- Draymen are prohibited from crossing tracks in the terminal

IN-GATE

- Gate personnel will perform inbound inspection for equipment damage

DRAYMAN ASSISTANCE/ COMMUNICATION

- Draymen should call the office at 717-709-7800 for assistance